

Wrightsville Borough Newsletter

Happy Fall

IMPORTANT NUMBERS

BOROUGH ADMINISTRATION

717-252-2768, ext. 012 or 013

MUNICIPAL AUTHORITY

717-252-2768. ext. 011

HELLAM TOWNSHIP

POLICE DEPARTMENT

44 Walnut Springs Road

York, PA 17406

717-252-3714

NON-EMERGENCIES

911 EMERGENCIES

FIRE DEPARTMENT

125 S. 2nd Street

717-252-4770-Station

NON-EMERGENCIES

911 EMERGENCIES

STREET DEPARTMENT

717-252-4559

WATER DEPARTMENT

717-252-3711

SEWER DEPARTMENT

717-252-3276

TAX COLLECTOR

717-887-5992

ZONING DEPARTMENT

Solanco Engineering Associates LLC

717-786-0355



**Daylight Saving
Time ends Sunday,
November 3, 2024**

We welcome all Borough residents to attend the remaining
Borough Council Regular Meetings for 2024

• Monday, September 9, 2024

• Monday, October 7, 2024

• Monday, November 4, 2024

• Monday, December 9, 2024



All meetings begin at 6:30pm @ 601 Water Street, Wrightsville

**Wrightsville Borough Municipal Office will be
closed on the following holidays:**

Monday, September 2, 2024—Labor Day

Thursday, November 28, 2024—Thanksgiving

Friday, November 29, 2024 - Thanksgiving

Our Safety Guide to *Autumn Driving* This Season

Every Year thousands of people are injured, and hundreds of people are killed due to daylight savings time changes and the change of season.

Autumn means we need to be more careful as drivers.

1. WEATHER

Sudden changes in temperature, rain, snow and fog all make for hazardous driving. Be aware of the weather – know before you go.

2. SUNRISE & SUNSET

Daylight Savings Time means the sun on the morning drive might be right in your eyes. The sun goes down early now, so it gets dark a lot sooner! HEADLIGHTS!

3. CHILDREN & ANIMALS

Children are back to school and animals are busy preparing for winter. Look out for them. Slow down!

4. LEAVES

Leaves on the ground can be slippery and dangerous. Be careful when driving on leaf covered roads, whether it's raining or not. Clear leaves off your car before driving.

Back to School Driving Safety Tips

- Always stop for pedestrians in crosswalks.
- Do not speed.
- Watch out for crossing guards and obey their signals.
- NEVER text or use a cell phone while driving in a school zone.
- Always stop for school busses that are loading or unloading children.

BE AWARE. A child may easily forget to look for cars before attempting to cross the street.



OUTDOOR BURNING

Wrightsville Borough Ordinance 2014-2

An Ordinance prohibiting outdoor burning under certain circumstances; providing for certain exemptions; and provisions for penalties for violations thereof.

BURN WITH SAFETY IN MIND

- 🔥 Know and comply with the Borough's open burning ordinance
- 🔥 Check the weather forecast. Never burn when windy.
- 🔥 NEVER leave the fire unattended and ensure that it is completely out before walking away.
- 🔥 Keep a source of water nearby.
- 🔥 Never burn household trash in a fire pit.
- 🔥 Keep small children and animals away from the fire.

For more information visit our website:

<https://wrightsvilleborough.com/permits-and-ordinances/>

Or use the direct link below:

<https://ecode360.com/33265005>



Our Refuse Worker's Safety is Important!

Please help us keep our Refuse Workers Safe! They face unique injury hazards within their daily work duties. Workers jump on and off trucks, handle heavy loads, and may encounter dangerous materials. They work in all weather conditions as well. The most common cause of refuse worker fatalities continues to involve cars passing trucks too fast.

If you can't see the workers on the back of the truck, they also can't see you. Please slow down when passing one of our trash trucks, it's essential to keeping our workers safe!






Historic Wrightsville Announces Final Fundraising Events for 2024

September 28th – Visit us at the Paw Paw Festival/Wild & Uncommon Weekend from 9M-5PM at the Horn Center located at 4945 Horn Rd, York, PA 17406. We will be selling hot dogs & paw paw lemonade. There will be misc. vendors and activities throughout the day.

October 10th - Soup and Sandwich sale. Check our Facebook page or call the museum to place your order closer to the sale date.

October 25th - Mission Possible Gala Event & Fundraiser-Stay tuned for more information on our first formal gala event to be held at the Cool Creek Country Club, Wrightsville, PA.

December 7th - Holiday Tea-SAVE THE DATE!



Historic Wrightsville is always looking for volunteers for our various event and fundraisers. Please contact the museum or send us a Facebook message if you would like to help us in the future.

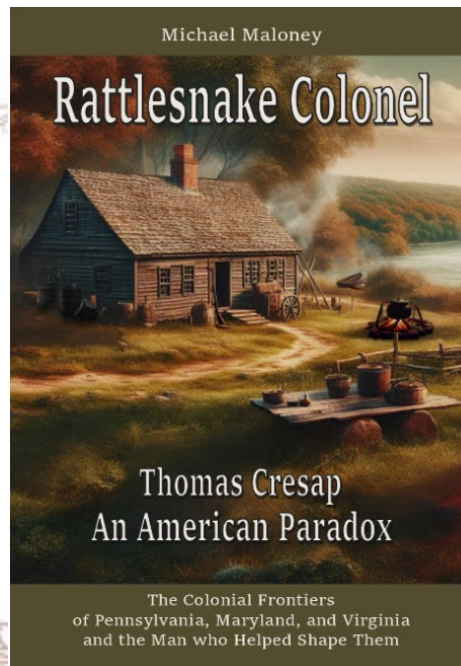
Wrightsville Historical Museum

News

Friday October 4th, 7:00PM

Michael Maloney, Windsor Township author will be sharing his new book, Rattlesnake Colonel, about Thomas Cresap and the Colonial Frontier of PA, MD, and VA. Location to be determined. Call museum (717-252-1169) for more details.

New museum display to be unveiled in late Fall 2024 - Wrightsville art and artists. Call the museum for more information.



Tours and Programs

Did you know that YCSWA offers FREE tours and programs? It's true! If you are looking for a fun, educational activity to do with your family, classroom or civic group, read on to learn more details about the tours and programs we offer.

YCSWA staff offer tours of the York County Resource Recovery Center (YCRRC). Here, all of York County's municipal trash that is combustible is turned into electricity. The trash you take to the curb each week is delivered to this facility. It is dropped into a combustion barrel and burned. As the trash burns, it heats up water to create steam. That steam travels to a turbine which is connected to a metal rod. The rotational energy of the rod is turned into electricity and can be used to power 20,000 homes at any given time of day. Fascinated by the process? Visit www.ycswa.com/resources/resources-for-educators/tours/ to learn more.



Tours and Programs

We also give tours of the Hopewell Area Recreation Complex (HARC). This beautiful area was once a working landfill. The landfill is currently closed, and it houses ball fields, playgrounds, a pavilion and walking trails. More than 122 species of birds have been spotted at this site. Birds aren't the only flying friends you will see at HARC. Monarch butterflies are frequently spotted at certain times of the year. They are attracted to the milkweed that has been planted in the grasslands at HARC.

YCSWA staff offer a variety of programs which can be scheduled in-person or virtually throughout the year. One of the most enjoyed hands-on programs available is Vermicomposting: Worms with an Appetite! This program focuses on how we can recycle food waste with a little help from worms. Each participant makes their very own worm cup bin to take home with them, complete with a few worms. They are taught how some food waste can be added to the cup, and it will be eaten by the worms who will then produce a rich material that can be used to help plants grow.

Another program favorite is Recycled Paper Revelations! This program focuses on the importance of being responsible with waste and being mindful about recycling. Participants get to learn about the paper wasp and hear how it creates a paper-like nest. They also learn about how paper has been made for many years using trees and water. YCSWA staff then talk about the importance of preserving our natural resources and the importance of recycling. Those in attendance will make a recycled piece of paper. For more information, www.ycswa.com/resources/resources-for-educators/programs/.

It is one of our goals to educate the community on how to responsibly dispose of trash. The tours and programs above are just a few ways we meet that goal. Please feel free to contact us with any waste related question.

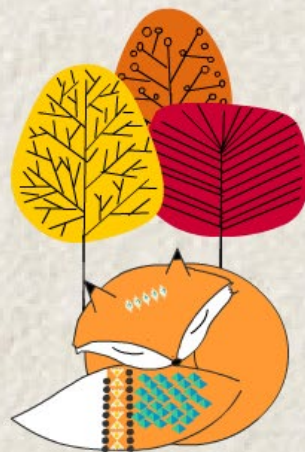


Fall

Word Search Puzzle

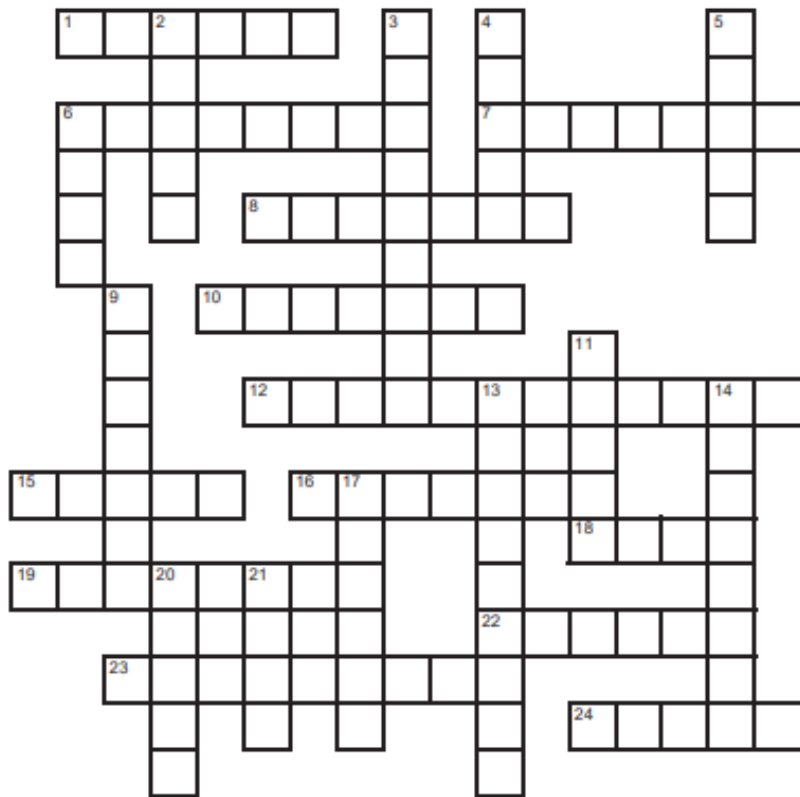
O X C F L B T C D I L J J P H
D P S Z Z S B C U D V W B U D
U G C U E I P H T Y B F B T L
W V A V U D U E X B Q V M L Q
A M R Z D F M S A J K O A S I
C A E K J K P T E Q C F A N C
H D C W L O K N K Y P J N O N
U L R Z Y E I U B F I F U V A
Z L O L C O N T I W N F N E A
P E W R F Z T S T I E Q G M U
R A K E J G M S M I C J R B T
H V A Z C H R K M Z O X R E U
M E E U S E A S O N N C E R M
U S C O R N F N V C E T A H N
Z R E I R A I N C O A T P S K

AUTUMN
CHESTNUTS
CORN
FALL
HARVEST
LEAVES
NOVEMBER
PUMPKIN
RAINCOAT
SCARECROW
SEASON
RAKE
REAP
PINECONE



I LOVE FALL

Acorn
Apple
Autumn
Chestnut
Cider
Cobweb
Fall
Football
Gourd
Halloween
Harvest
Hay Bale
Hayride
Leaves
Maize
November
Nuts
October
Pumpkin
Quilt
Rake
Scarecrow
September
Sleet
Thanksgiving



ACROSS

1. They fall from trees.
6. Popular autumn sport.
7. Jack-o-lantern gourd.
8. The 10th month of the year.
10. The gathering of crops.
12. The fourth Thursday in November.
15. Might be patchwork.
16. Seat at a square dance (two words).
18. Leaf gathering yard tool.
19. They are roasted on an open fire.
22. Halloween decoration made by a spider.
23. The 9th month of the year.
24. Decorative squash.

DOWN

2. Oak tree's fruit.
3. October 31st.
4. Honeycrisp.
5. Also known as corn.
6. The season that follows summer.
9. Fun activity on a farm.
11. Drink made from apples.
13. Used to keep birds off of crops.
14. The 11th month of the year.
17. Another word for the fall season.
20. Semi-frozen rain.
21. What squirrels often gather.



Shaping the Future of the Region

The Regional Long Range Comprehensive Plan data collection phase has been in process since early this year. Residents of Hallam Boro, Hellam Township and Wrightsville (HHW Region), participated in an online survey, focus groups, and demographic studies. The information will be used to form recommendations for the long-term plan and major steps for the implementation over 5 to 10 years.

The following is a summary of the topics concerning opportunities brought forth in the three focus groups.

Land use and development focus group

- ♥ Look at rt 30 interchanges for expanding commercial/industrial uses
- ♥ Need for landscaping of site to improve appearance of development from roadways
- ♥ Improve regulations such as zoning to encourage the type and appearance of development that is needed
- ♥ Preservation of agriculture and natural areas are regulated but, better enforcement is needed

Parks recreation and tourism

- ♥ Connecting and extending existing trails is a priority.
- ♥ Use trails to connect to parks and other destinations such as downtowns.
- ♥ Capture tourism dollars through more lodging and hospitality opportunities.
- ♥ Invest in small businesses.
- ♥ Route 462 should be considered for a scenic byway.
- ♥ Partnerships will be important period look at trail town local businesses associations, Chamber of Commerce to help.

Business focus group

- ♥ General excitement about the opportunity from outdoor recreation economy
- ♥ look at regulations that allow more outdoor seating.
- ♥ Expand parks and trails to connect to downtown businesses.
- ♥ Need local business support to help entrepreneurs maneuver through approval process.
- ♥ Local business organizations who can support each other and build synergy.
- ♥ Wayfinding along trails.

The next step to involve the community will be a public meeting in the November time frame.

Looking forward to seeing you there!

2024 MUNICIPAL GENERAL ELECTION

Tuesday, November 5, 2024
7am to 8pm

Borough Voting Locations

1st Ward

Municipal Building – 601 Water St.

2nd Ward

Wrightsville Presbyterian Church – 205 N 2nd St.

3rd Ward

Wrightsville Assembly of God – 365 Orange St.

★ 2024 General Election ★ **★ Important Dates ★**



Oct.

21

**Last day to register to vote
in the general election.**

vote.pa.gov/Register



Oct.

29

**Last day to apply
for a mail ballot.**

vote.pa.gov/MailBallot



Nov.

5

**Election Day. Polls are
open from 7 AM to 8 PM.**

vote.pa.gov/Polls



Nov.

5

**Completed mail ballots
must be received by 8 PM.**

vote.pa.gov/County

For more information visit – Vote.PA.gov

Reworld™ and Goodwill Keystone Area have joined forces to provide free electronic waste recycling locations



Take advantage of this service at the following Goodwill locations:

- 965 Loucks Road, York
- 1120 Roosevelt Ave, York
- 450 Eisenhower Drive, Hanover
- 535 S. Main Street Market Square Center, Shrewsbury



What electronics can residents bring?

What will be accepted:

- Computing and Peripheral Devices
 - Computers, Monitors, keyboards, mice, printers, printer/scanner/copier all-in-one devices, networking equipment
- Entertainment Electronics
 - Video Players (VCR/DVD/Blu-ray players), Gaming Systems, Audio Devices (stereos, radios, MP3 players)
- Communication Devices
 - Telephones, Mobile Devices
- Visual and Imaging Equipment
 - Cameras (cameras, video cameras), Televisions, Cable or Set-Top Boxes
- Small Appliances
 - Toasters, Vacuum Cleaners
- Miscellaneous Electronics/Items
 - Cables, Electronic Wiring, Answering Machines



What electronics should residents NOT bring?

What won't be accepted*:

- Loose Batteries, Bulbs, Smoke Detectors, Hazardous Household Waste, White Goods (refrigerators, ranges, water heaters, freezers, unit air conditioners, washing machines, clothes dryers and other similar domestic and commercial large appliances), Freon-Containing Devices, Devices Containing Mercury

York County Now Has New Electronics Recycling Locations!

Reworld and Goodwill Keystone Area have joined forces to provide free electronic waste recycling locations in central and southeastern Pennsylvania. This program utilizes Goodwill's network of stores and donation centers as designated collection points for residential electronics. Reworld then takes the electronics and responsibly recycles them. Reworld is a proven provider of e-waste recycling, recovery and environmentally responsible disposal, having recycled more than 135 million pounds of e-waste. York County residents can take advantage of this service at the following Goodwill locations:

- 965 Loucks Road, York
- 1120 Roosevelt Ave, York
- 450 Eisenhower Drive, Hanover
- 535 S. Main Street Market Square Center, Shrewsbury

Free electronics recycling is also available at the York County Resource Recovery Center, as well as Fairfield Township and Penn Township Recycling Centers. For additional information, visit

www.ycswa.com/services/recycling/electronics/.

Rechargeable Batteries Do Not Go into Your Trash or Recycling

If you have a cellphone, you use a rechargeable battery. If you use power tools, you use rechargeable batteries. While convenient during their lifetime, rechargeable batteries require proper disposal when they are no longer usable. Conventional disposal of these types of batteries in your curbside pickup can cause problems! Trash is compacted both in the garbage truck and at our facility. When subjected to intense pressure these batteries combust and ignite causing fires in either garbage trucks or at our facility. Rechargeable batteries should not go into your recycling bin either. Please dispose of them properly! Keep rechargeable batteries out of your curbside trash and recycling bin and dispose of them properly.

Visit www.call2recycle.org for a listing of collection sites for these potentially hazardous batteries. NOTE: Household alkaline batteries like Eveready, Duracell (AA, AAA, 9-volt, C, or D sizes) can be disposed in your regular trash.

Visit <https://www.ycswa.com/batteries/?hilite=rechargeable+batteries> for more information on rechargeable battery disposal.

**It Is Unsafe To Put
RECHARGEABLE BATTERIES
In Your Trash Or Recycling Bin!**



YCSWA
Facilitating Responsible Waste Management

Yard Waste Disposal

Are you wondering what you should do with your yard waste as we are in full swing in the season of raking leaves? Let me give you some tips.

Most municipalities offer yard waste pick-up at your curb which makes yard waste disposal very easy. Contact your municipality or waste hauler directly to find out what services are available to you. If yard waste services are not available to you, no worries. There are other options to help you.

If you simply have leaves and grass, you can use a mulching mower to mulch them. Your back will thank you and the clippings on the lawn will help prevent weeds from germinating. Another option for disposal of grass and leaves is to place them in your garden beds and around trees and shrubs to prevent weed growth. Composting your clippings and leaves is another great way to make use of them. If you are unsure how to do this, do an internet search for “composting”. You will find instructions for different composting methods and a list of materials needed.

If those options aren't your cup of tea, you can dispose of vegetation and small branches with your regular garbage or bring your yard waste to the York County Resource Recovery Center (YCRRC). Be sure to visit www.ycswa.com/services/waste-disposal/ for specifics on what can and cannot be accepted at the YCRRC. There are some items that we cannot accept, however our website will direct you to a business that can help you if the YCRRC cannot accommodate your needs.



From Leaves and Tree Trimmings to Weeds and Stumps, You Will Find a Quick Answer to How to Manage Your Yard Waste By Visiting Our Website
www.ycswa.com/services/waste-disposal/yard-waste/



2024 WRIGHTSVILLE BOROUGH LEAF COLLECTION

Leaf collection will begin the last week of October and run through the first week of December.

When heavy rain and storms are expected, please refrain from putting leaves out, as leaves can be washed into roadways, creating slick and dangerous conditions. Leaves can also clog the storm drain catch basins and cause road flooding. Do not place sticks and branches in your leaf piles as a leaf vacuum is not designed to pick up anything other than leaves.

Because the vehicle and equipment used for leaf collection can be hard to maneuver around cars and other objects, piles of leaves placed too close to, or under vehicles, will not be picked up. Additionally, leaf piles on curves and bends may not be picked up because curves and corners cause sight distance issues for drivers.

Please place your leaves in the same location as your refuse containers. Special pickups may be granted by the Borough by placing a call to the Streets Department Office @ 717-252-4559. Please confirm the pickup location is acceptable prior to putting leaves out.



Message from the Tax Collector

Tax Sit in Schedule:

***Wrightsville Borough Office:**

- Tues August 20th 4-6pm
- Sat August 24th 9-11am
- Mon August 26th 3-5pm

***Wrightsville Fire Dept:**

- Thurs August 22nd 3-5pm
- Wed. August 28th 4-6pm
- Thurs. August 29th 3-5pm

Contact Info:

Randee A. Scritchfield
Wrightsville Borough Tax Collector
Phone: 717.887.5992
Fax: 717.252.1912
wwillettaxcollector@comcast.net

***OFFICE HOURS BY APPT. ONLY**

- Reminder there's 2 per capitas a year. The one in the fall (school) is the one that recognizes the over 65 exemptions.
- PLEASE put a phone number on your check so I can contact you with any questions, concerns or discrepancies.
- I cannot change the information on the real estate bills in regards to names, unless the property sells or is refinanced. For example, if you spouse passes away and their name is on the bill, I cannot remove it just because of their death. Those changes are at a county level, and I only make the changes they provide to me.
- Per Capita bills however can be changed at my level. So, if there's a name change, you can cross out the incorrect information and provide the correct for me to update in my system.
- Landlords: It is your responsibility and a Borough ordinance to contact me with any tenant changes. That applies to anyone living at the property over the age of 18.
- Receipts: You need to send a self-addressed stamped envelope AND your FULL bill. I am not making copies anymore. You will have to bring the second half of the bill to my office for me to stamp to get your receipt.
- As always if there are any questions or concerns, please don't hesitate to reach out to me and I will do my best to answer any questions.



YORK
COUNTY
WE WANT TO
HEAR FROM YOU



TalkTrashToUs.com



YCSWA Wants to Hear from You!

YCSWA recently posted a survey link on www.ycswa.com and on billboards throughout York County asking residents to “Talk Trash to Us”. The survey, located at www.TalkTrashToUs.com is an effort from the YCSWA to gain knowledge about how those who live and work in York County perceive the YCSWA and what they would like to see in trash management in the future.

WBMA Needs Your Help!



The Wrightsville Borough Municipal Authority needs your help identifying your service line materials. We are asking that you log on to our Wrightsville Borough website and click on the **Water Service Line Survey** tab at the bottom left hand of the main page. Or follow this link:

<https://wrightsvilleborough.com/wrightsville-borough-municipal-authority-service-line-survey/>

Complete the information listed on the survey and hit submit! We appreciate your help in identifying your water line pipe materials!

Message from Stormwater Authority & Municipal Authority

ADMINISTRATION OFFICE DOES NOT ACCEPT CASH. ALL PAYMENTS
MUST BE MADE WITH A CHECK OR MONEY ORDER.
THANK YOU.



BILLING ANNOUNCEMENT

THE STORMWATER FEE IS NOW INCLUDED WITH THE MONTHLY WATER, SEWER, AND REFUSE BILL

- The charge is based on the ERU (Equivalent Residential Unit) yearly fee which will be divided into monthly installments.
- Customers with empty parcels, parking lots, or cemeteries will be sent a separate annual bill for the full amount.
- Customers with a past due stormwater bill will be turned into collections
- By making these changes it will be more cost effective and efficient.

WATER BILL DUE DATES

- September 11
- October 9
- November 6
- December 4



All billing inquiries, or questions, please contact the Municipal Authority Office at 717-252-2768, extension 011 or 012



SEE YOU NEXT SEASON

~BOROUGH OFFICIALS~



Ward 1

Michael Gromling

Councilman

Brian Lyle

Vice President

Ward 2

Sara Barrett

Councilwoman

Eric J. White

Councilman

Ward 3

Alicia Ferrari

Councilwoman

Joseph Giandalia

President

Tayne Slenker

Mayor

**WRIGHTSVILLE BOROUGH
MUNICIPAL OFFICE
HOURS OF OPERATIONS
MONDAY-FRIDAY
9AM-4:30PM**

601 Water Street ~ PO Box 187
Wrightsville, PA 17368
Phone: 717-252-2768
Ext 011 – Municipal Authority
Ext 012 & 013 – Borough
Fax: 717-252-0725
www.wrightsvilleborough.com

The governing body of Wrightsville Borough wishes everyone a safe and enjoyable Fall!

